



From PVA President



**Barb Zanoni**



### Welcome Spring!

Can you smell the flower and tree blossoms as they burst with energy and newness? March has arrived and with it, a sense of freshness and renewal. This is the month we've been waiting for! Our annual **Palo Verde Art Show and Sale** is upon us! I hope you plan to enter at least one piece of your artwork and make this year's show the best ever! Thanks to all who have volunteered to make it a success. We have work ahead of us, but I know it'll be enjoyable and fulfilling. There is a good chance that next year we will expand our show into the East Hall of Sundial! That will give us the opportunity to spread our wings like a migrating bird!

If you have artwork hanging in the gallery please be sure to pick it up on Tuesday, March 19<sup>th</sup> from 9 to noon so it clears our walls for the room set-up. The following day, Wednesday the 20<sup>th</sup>, we will be receiving your artwork for the show between 1 and 4pm. Please see the March calendar and/or the yellow prospectus (pick one up from the desk in the art room) for more details.

Our field trips have been well attended and we are having fun together! We plan on going to lunch after the next one, so won't you join us? We'd love to have you! More information is coming so watch for an eblast. If you aren't receiving the eblasts, first check your spam, and then let us know if you didn't receive it. If you have a friend who is getting theirs, it might help if they try forwarding it to you.

Check out the classes for March. There could be something that'll pique your interest! And take a look at the window display with everyone's "Spring" artwork; it just may refresh, energize and inspire you!

**See you in the art room!**

### **IMPORTANT DATES TO REMEMBER**

March 18—Meeting in Social Hall 12 noon

March 19—Gallery Paintings Removed 9 to 12

March 20—Art Show Paintings Received 1 to 4

March 21—Art Show Reception for artists 4 to 6

March 22 & 23—PVA Art Show—open to the public 9 to 3

March 23—Art Show Paintings Removed 3 to 3:30

March 25—Gallery Paintings Received 10 to 2



## ***March 2024 PVA Showcase***

***ALL MEMBERS' ARTWORK***

### ***Spring Scene***



*Donna Berger*  
*Showcase Coordinator*

***SPRING*** is the theme for March Showcase. All members were invited to enter their artwork. Entries were received and hung on February 29 by Showcase Coordinator, Donna Berger. The artwork will be on display for the entire month of March so come see what everyone is painting!

The themed showcase is a great opportunity for all members to show their work. All members' artwork is eligible for entry. Size and acceptance is restricted to the space available in the showcase.

Get your art ready for the next **THEME SHOWCASE** in May!  
Theme will be announced at the March meeting.

### **SHOWCASE UPDATE**

***Themed showcases will be the months of  
May, July, September, November***

**Single member "Artist of the Month" will be the months  
of April, June, August, October, December**





### **The 19th Century Trend that Changed the Western Art World**

**Lee Hill, Guest Columnist**

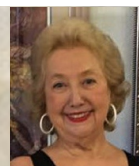
In the late 19th century, Japan (reluctantly) opened to international trade after 200+ years of isolation. During this remarkable period in European art history, Japanese artworks flooded the Western market, (a phenomenon known as Japonisme) and their widespread popularity inevitably influenced artistic practices. Many of the leading Impressionists even collected Japanese art. Some distinct characteristics that made the Japanese prints stand out: dramatic, cropped compositions and unusual vantage points, floral motifs and urban street scenes, intimate domestic scenes, flattened space with bold use of color, and stylized figures.

The close, cropped compositions prevalent in Impressionist art were influenced by Japanese woodblock prints and folding screens. **Edgar Degas** integrated this popular Japanese style of cutting into images in many of his most famous works of art. In his backstage ballet dancers, Degas explores how cropping an action sequence mid-scene can create the spirited sensation of movement. Another trick the Impressionists borrowed from Japanese artists was the exploration of unusual angles and directional lines of perspective. Wide-angle, panoramic bustling street scenes seen from a high vantage point and sometimes from one side emerged such as those by **Camille Pissarro**. In much of **Claude Monet's** late art, we see the influence of decorative, brightly colored floral motifs. Monet's entire water garden at Giverny was based around Japanese flora and fauna, with that well-known curved Japanese bridge as its defining feature and the famed Water Lilies he painted there are a true homage to Oriental plants and flowers.

Unlike Western art of the 19th century is the use of bold, flat panels of color. Impressionists adopted this decorative, design-like quality as a radical and modern new way of making art. Both Degas and **Mary Cassatt** portrayed women taking part in domestic, sometimes deeply intimate scenes, performing daily rituals like brushing their hair or bathing. In Cassatt's intimate, interior scenes, we see her use of linear contours and flattened forms. This more non-realistic style would start the changes that would eventually lead from the Post-Impressionist artists to **Picasso's** cubism and the beginnings of modern abstract art.







**Student Showcase**

**Palo Verde Artists  
February Happenings**

*Photos by Jan Cox  
Club Photographer*



**Artist of the Month Showcase**



**Ruth Little's Art Show**



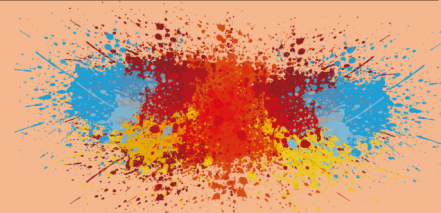
**February Meeting**

**Art Show at WHAM**



Contact Marion at [mwishnefski@msn.com](mailto:mwishnefski@msn.com) with newsletter submissions

For Up-To-Date PVA information visit [PaloVerdeArtists.com](http://PaloVerdeArtists.com)





# PVA March 2024 Calendar

Continuing -> **Red** New Classes-> **Green**

Workshops -> **Blue** Special Events-> **Purple**

<i>Sign up sheets for classes and workshops are located in the PVA Club Room at Sundial</i>					
				<b>Friday, March 1</b> <b>Intermediate Watercolor</b> <b>1 to 4 p.m.</b> <b>Ruth Little</b>	<b>Saturday March 2</b> <b>Intuitive Watercolor w/Ink</b> <b>1 to 4 p.m.</b> <b>Alison Evans Killam</b>
<b>Monday March 4</b>	<b>Tuesday March 5</b> <b>OPEN STUDIO</b> <b>9 a.m. to 12 Noon</b> <b>Beginning Watercolor</b> <b>1 to 3 p.m.</b> <b>Nedda Oswald</b>	<b>Wednesday March 6</b> <b>Intermediate Drawing</b> <b>1 to 4 p.m.</b> <b>Ruth Little</b>	<b>Thursday March 7</b> <b>Portraits</b> <b>1 p.m. to 3 p.m.</b>	<b>Friday March 8</b> <b>Intermediate Watercolor</b> <b>1 to 4 p.m.</b> <b>Ruth Little</b>	<b>Saturday March 9</b>
<b>Monday March 11</b>  <b>Critique</b> <b>1 p.m.</b> <b>Ruth Little</b>	<b>Tuesday March 12</b> <b>OPEN STUDIO</b> <b>9 a.m. to 12 Noon</b> <b>Beginning Watercolor</b> <b>1 to 3 p.m.</b> <b>Nedda Oswald</b>	<b>Wednesday March 13</b> <b>Intermediate Drawing</b> <b>1 to 4 p.m.</b> <b>Ruth Little</b>	<b>Thursday March 14</b> <b>Portraits</b> <b>1 p.m. to 3 p.m.</b>	<b>Friday March 15</b> <b>Intermediate Watercolor</b> <b>1 to 4 p.m.</b> <b>Ruth Little</b>	<b>Saturday March 16</b>  <b>Intuitive Watercolor w/Ink</b> <b>1 to 4 p.m.</b> <b>Alison Evans Killam</b>
<b>Monday March 18</b>  <b>PVA Meeting</b> <b>12 NOON</b>  <b>Social Hall</b> <b>Bring Snacks</b>	<b>Tuesday March 19</b>  <b>REMOVE PAINTINGS FROM GALLERY FOR SHOW</b> <b>PICK UP 9-12</b>	<b>Wednesday March 20</b>  <b>RECEIVE PAINTINGS FOR PVA ART SHOW</b> <b>1-4 PM</b>	<b>Thursday March 21</b>  <b>PVA ART SHOW RECEPTION</b> <b>4-6 PM</b>	<b>Friday March 22</b>  <b>SHOW OPEN TO THE PUBLIC</b> <b>9 AM -3 PM</b>	<b>Saturday March 23</b>  <b>SHOW OPEN TO THE PUBLIC</b> <b>9 AM -3 PM</b>  <b>ARTIST PAINTING</b> <b>PICK UP 3 PM</b>
<b>Monday March 25</b>  <b>GALLERY EXCHANGE</b> <b>Paintings Received</b> <b>10 AM -2 PM</b>	<b>Tuesday March 26</b> <b>OPEN STUDIO</b> <b>9 a.m. to 12 Noon</b> <b>Beginning Watercolor</b> <b>1 to 3 p.m.</b> <b>Nedda Oswald</b>	<b>Wednesday March 27</b> <b>Intermediate Drawing</b> <b>1 to 4 p.m.</b> <b>Ruth Little</b>	<b>Thursday March 28</b> <b>Portraits</b> <b>1 p.m. to 3 p.m.</b>	<b>Friday March 29</b> <b>Intermediate Watercolor</b> <b>1 to 4 p.m.</b> <b>Ruth Little</b>	<b>Saturday March 30</b>  <b>Intuitive Watercolor w/Ink</b> <b>1 to 4 p.m.</b> <b>Alison Evans Killam</b>