



# Palo Verde Artists

## Member News

### *SPRING SHOW THANK YOU*

Thanks to all of you that participated in the Spring Show and Gift Shop. Eileen Moore and Alison Killam did a wonderful job on setting up the most beautiful show. A great deal of work went into the organization of the show and the two of them are very much appreciated.

A Big Thanks to all of the volunteers that made everything happen. Thank you to the artists that participated by entering their artwork and gifts.

Now that the Spring Show has been completed, we are looking for volunteers to chair the fall festival. It will again be in the Art Room at Sundial.

### *Gallery Exchange Reminder—Monday March 31*

The PVA Room Gallery exchange will be Monday, March 31 from 10 a.m. to noon. Members are reminded to pick up their previous art work and drop off new paintings.

### *SPECIAL PVA EVENT FOR ALL MEMBERS PLEIN AIR PAINTING AT LAKEVIEW*

When: Wednesday, April 9  
Time: 10 a.m. to Noon  
Location: Lakeview Recreation Center  
Leader: Kaj Lofgreen

***No sign up. Just bring your lunch and enjoy drawing, painting or just socializing by the lake.***

### *Update on Dick Blick Art Store Show—April and May*

The main contact for this show is Steven Dembrowsky, General Manager at Blick Art Materials Store in Glendale.—602-698-8459.

Kai Lofgreen is the liaison for this show. Kai will be sending out notifications and further information via email to those who have signed up to participate.

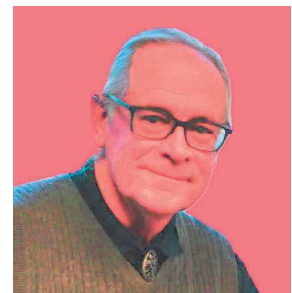
## Our Leadership Team



***Dianna Pairokh  
President***



***Kaj Lofgreen  
Vice President***



***Josh Thompson  
Treasurer***

**Tip For  
Budding Artists  
Develop Your  
Style**

# Palo Verde Artists April Field Trips And Other Events Open to all PVA Members



**Friday, April 25**

**Art at Frontier Town**

**FIELD TRIP**

**Frontier Town**

**6245 E. Cave Creek Road  
Cave Creek, AZ 85331**

**This is a juried art show.**

**Admission is free.**

**There will be 40 exhibitors.**

**Meet up at 11 a.m. at the Sundial parking lot  
Kaj Lofgreen and Dianna Pairokh will head the trip**

Kevin's Art Attack Art and Craft Show is back at the lively intersection of School House Road and Cave Creek Road, in the heart of Cave Creek, Arizona! This open-air art and craft festival showcases dozens of talented artists and crafters, offering unique creations and one-of-a-kind finds. Discover art, connect with creators, and enjoy the vibrant atmosphere in beautiful Cave Creek!

**April 4 to May 8**

**Sustainable Exhibit**

**EVENT**

**Arts HQ Gallery**

**16126 N. Civic Center Dr  
Surprise, AZ**

**Hosted by West Valley Arts Council**

**Artwork for Arizona Artists**

**Reception—April 4 from 4 to 7 p.m.**

***Peggy Juneau* will be showing some of her work at this event.**

This exhibit is part of the Arts HQ Gallery's ongoing efforts to showcase various artistic medium and will feature original 2D and 3D artwork made from natural and/or upcycle materials. Sustainable Artists are clever and resourceful, transforming materials that would normally be discarded into works of art. Beyond trash to treasure this exhibit will showcase the skill involved with creating fine art from orphaned materials giving patrons the challenge of identifying upcycled materials, and supporting the environment.

**Thursday, April 10—Volunteers needed for Easter Egg Event**

**Sundial East Hall**

**Sponsored by RCSC**

**9 a.m. to 3:30 p.m.**

RCSC needs volunteers to help prepare for their Easter Egg Event. Volunteers will report to the Sundial East Hall on Thursday, April 10 from 9 a.m. to 3:30 p.m. to stuff eggs for different age groups. Signup for volunteering on April 10 is at the Sundial Events and Ticket Sales Office (located in the outdoor plaza) on

**Monday, Tuesday, Thursday and Friday**

**8:30 a.m. to 3:30 p.m.**

**Wednesdays**

**12 noon to 6 p.m.**

**Also RCSC needs volunteers for Face Painting on Saturday, April 19 from 9am-11:30 am, with arrival between 8:30-8:45. They should also sign up at the Sundial Events and Ticket Office.**

# BRUSHSTROKES

Lee Hill, Guest Columnist

## Are you blue?

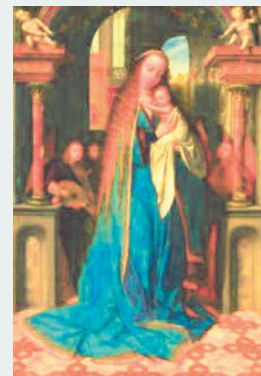


If you're American, blue might be your favorite color. But when used as a pigment for painting, blue has a history as the rarest and most precious shade of all. The earliest forms of blue pigment were extracted from the semi-precious limestone rock mixture **lapis lazuli**. Originating from the Middle East, in particular, Afghanistan, the word comes from the Latin 'lapis', which translates into 'stone', and 'lazuli' meaning 'blue'.

Unlike lapis lazuli, **Egyptian blue** is a synthetic pigment that was developed approximately 4,500 years ago. A bright crystalline substance, it is a lighter shade than lapis lazuli, created to meet the expensive demands and eventually spread throughout Egypt, Greece and eventually into the Roman Empire.

The blue pigment known as **ultramarine** (meaning 'beyond the sea') became incredibly popular during the Italian Renaissance. Once so expensive it cost more than gold, it was used widely in Europe from around the twelfth century to depict royalty and is one of the most prevalent colors in western art history, commonly used by Italian artists in the fourteenth and fifteenth centuries by artists such as Raphael, Botticelli and Titian in their large-scale works. In Christian iconography, blue became one of the most sacred colors, preserved mostly for important religious subjects, like the Virgin Mary.

Derived from the crop known *Indigofera tinctoria*, **indigo** was imported along the Silk Road, from India and Egypt. The synthetic pigment **Prussian blue** is a hue that emerged in Germany in the eighteenth century, was much cheaper than ultramarine and was easier to create. During Picasso's 'blue period' (1901 to 1904), he focused on using many shades of blue, particularly Prussian blue. Other modern artists who had a strong connection to the color included Vincent Van Gogh, Henri Matisse and Marc Chagall.



Today, psychologists claim that blue is hardwired into the human psyche. The power of blue is so accepted that designers often choose it to decorate offices, believing research that it boosts productivity and feelings of calm. How often does it show up in your work?

## Kaj Lofgreen April 2025 Artist of the Month



From the time he was a young boy, *Kaj Lofgreen* showed a keen interest in drawing and was influenced and inspired by his grandfather who was a portrait artist, illustrator, and art director.

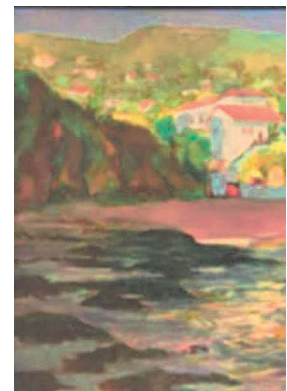
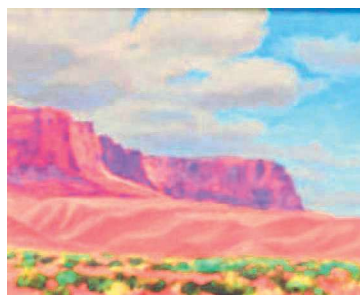
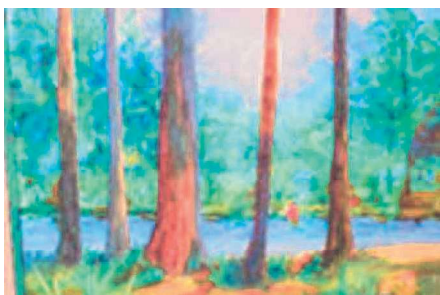
After college, Lofgreen held positions as an illustrator and graphics assistant for a large architectural firm in California. Later, his experience increased into art gallery sales and business management.

After some years working in educational services for college students and the University of Missouri, Lofgreen moved to Sun City, nearing retirement.

From his Arizona studio, he is inspired by the Southwest landscape. He also finds enjoyment in teaching art skills to others, and for a time he taught secondary art and Spanish at the high school level. For the past few years, his focus has been painting outdoors in oil, as well as studio landscapes. Additionally, he is creating works with acrylics and mixed media inspired by stories and dreams.

Lofgreen originally joined Palo Verde Artists in 2019 and returned to the club after a three-year pause. He is now the Vice President of the club.

You can view his art for the entire month of April in the showcase outside the Palo Verde Art Room, upper level, Sundial Recreation Center,



# March Art Show Pictures



Gift Shop Tables



Lupe Cavanaugh



Judge—Augie Tantalo



Reception Table



Judge's Choice  
Award  
Leland Castro

*Photos by  
Jan Cox*